

Federal Real Property Association

November 13, 2018

U.S. Department of Agriculture

Donald K. Bice, Deputy Assistant Secretary for
Administration, Senior Real Property Officer

Paul Walden, Chief, Property Management Division,
Office of Property and Fleet Management

Robert Haughton, Director, Management Services
Division, Farm Production and Conservation Mission
Area



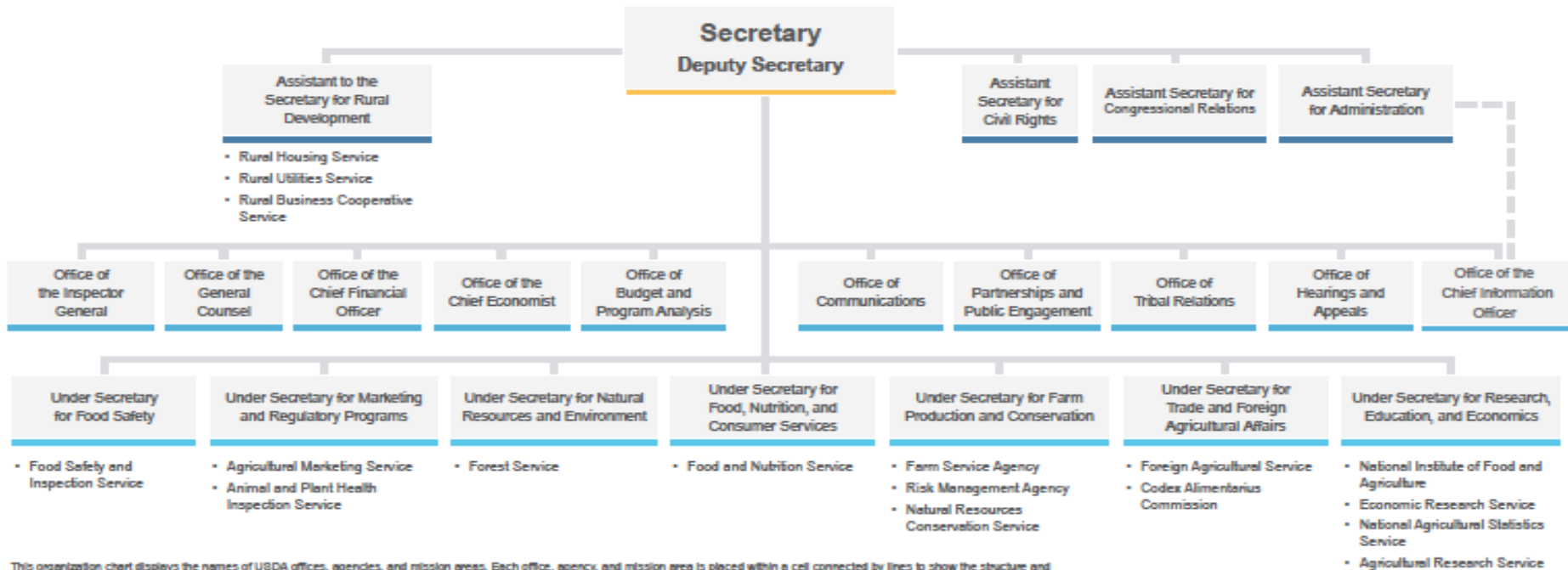
Topics

- Introductions
- USDA Organization
- USDA Statistics
- NIFA/ERS Relocation
- Case Study: Albuquerque, NM Collocation
- USDA Reorganization





USDA Organization Chart



This organization chart displays the names of USDA offices, agencies, and mission areas. Each office, agency, and mission area is placed within a cell connected by lines to show the structure and hierarchy (Under Secretary, Deputy Secretary, or Secretary) for which they fall under. An HTML version that lists [USDA Agencies and Offices](#) and [USDA Mission Areas](#) is also available on usda.gov.



USDA Organization

- <https://www.usda.gov/sites/default/files/documents/usda-organization-chart.pdf>

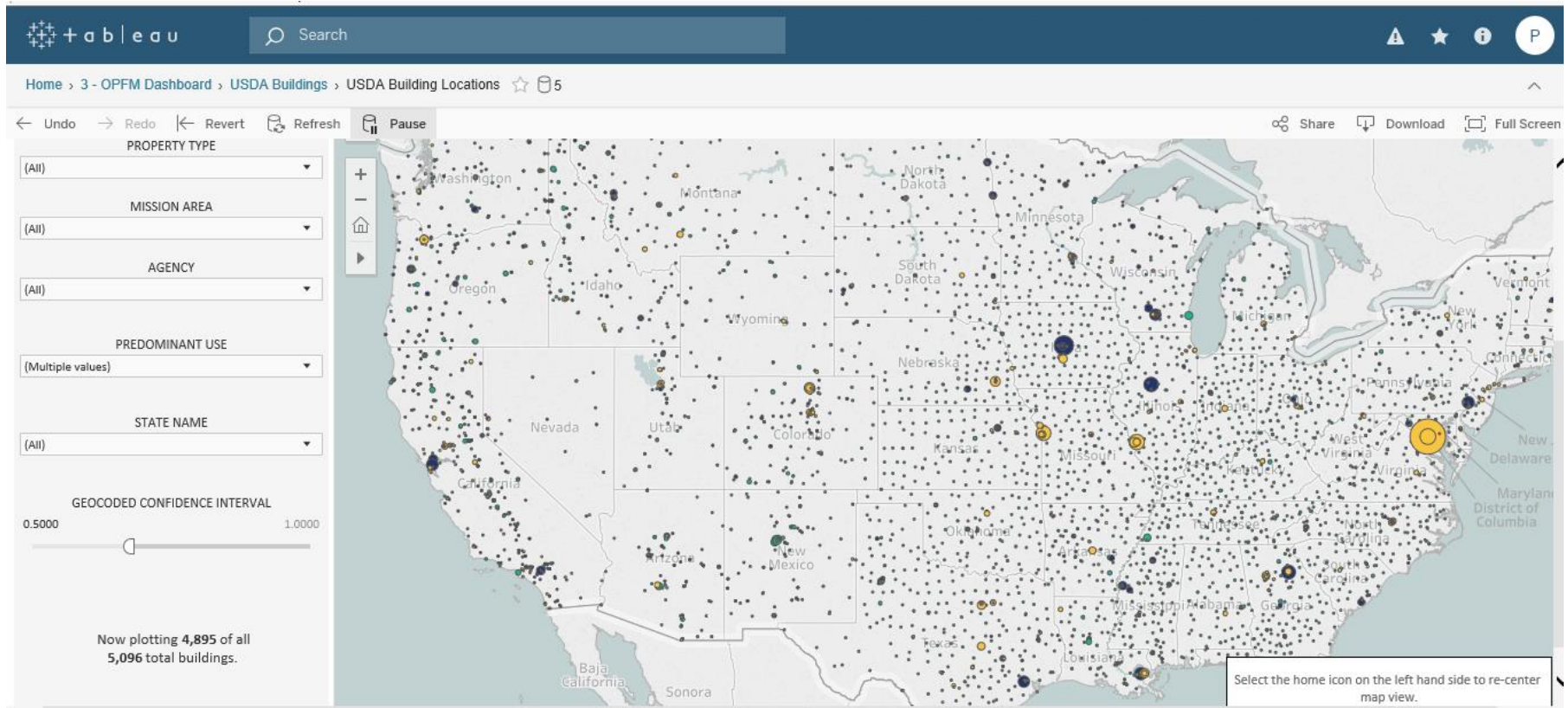


USDA Key Statistics

- Second Largest Civilian Agency Real Property Portfolio
- 20,475 owned buildings-40.7 million square feet, \$594 million Operations and Maintenance Cost
- 193 million acres land, including public domain lands
- 1,040 GSA Space Assignments-10.2 million square feet
- 3,500 direct leases-\$251 million annual rent bill
- Annual footprint reduction average 1%



USDA Dashboard



Albuquerque, NM Collocation Project

- 4 USDA agencies (APHIS, FSA, NRCS, RD) located in GSA leased space (6200 Jefferson Blvd)
 - Annual rent \$1.2 million
 - Average utilization rate 319 sq ft/employee
- FS had a long term lease in Pan American Bldg
 - Reduced utilization to 235 sq ft/employee
 - Annual savings: \$263,000
 - Projected savings over remaining term of lease \$5.3M
 - Payback period on relocation/furniture/buildout: 1.5 years



FS Consolidation in NCR

